



Pacific Beach  
United Methodist Church

# BEACH BREEZE

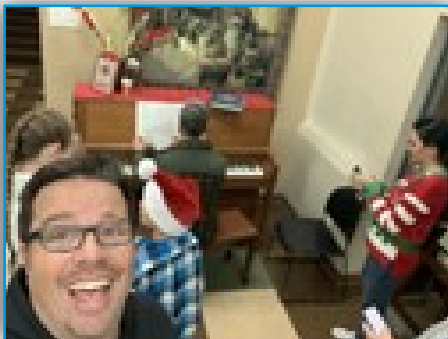
A Monthly Newsletter From Pacific Beach United Methodist Church

January 2020

## “Light of the World” at PB UMC December 2019



Photo by Mark B.



Advent Kick-Off and Caroling December 1, 2019

Photo by Pastor Bob Rhodes



Children's Time December 8, 2019

Photo by Su-Yen K.



Our Children's Choir in Worship December 8, 2019

Photo by Pastor Bob Rhodes



Musical: "A Baby Changes Everything" December 15, 2019

Photo by Mark B.

## Pastor Bob's Printed Blog

Dear Friends . . .

As we begin this new year—indeed, new decade—I find myself compelled to consider what has taken place over the course of the last year. In some ways, this echoes the tradition of our Jewish siblings in the celebration of Rosh Hashanah (usually in the fall).

As I understand it, the celebration of Rosh Hashanah can be understood as the Jewish new year. But its celebration is preceded by a period of self-examination and repentance before Rosh Hashanah begins a ten-day period of awe, and then arrives at Yom Kippur, a day of atonement.

In the U.S., our culture places a great deal of emphasis on the New Year celebration. We love to gather with loved ones and our favorite appetizers (or other unhealthy foods). We listen to old and new songs, we enjoy tasty beverages, we watch new faces on classic television shows, the dropping of a lighted ball in New York's Times Square. Then we manage a few meager hours of sleep before watching parades and football.

We sing about old acquaintances being forgotten, and the goofy glasses worn always take the shape of whatever year is to be celebrated. My overall sense is that we are largely focused on the coming year rather than on that which has passed. Surely there are exceptions to this assessment, but I generally see the New Year celebration in that way.

I wonder, though, if this thoughtful time of self-examination and reflection would be helpful. I wonder how different things would be if we took this time. It is in this spirit that I reflect on the past year here at Pacific Beach United Methodist Church.

In February, our denomination sent representatives to seek ways to find “a way forward” in our ongoing disagreement about human sexuality. For many of us who feel God's strong call to include *all* God's children in the life of the Church, the result was both heartbreaking and hurtful. This denominational decision has impacted our congregation directly as several families have withdrawn as a result.

In June, we very suddenly lost our beloved Office Administrator, Aimee Kay. Aimee's ability and organization, her compassion and her humor, her institutional knowledge and her near-prescient ability to anticipate the unexpected are dearly missed. In truth, we—and more personally, I—have not fully recovered from her loss.

In July, we began a new style of worship during our 10:30 hour. This has been unexpectedly difficult, with some of

our members vocally in favor of this new style, some vocally opposed, and some who struggle with change of any kind. Our Growing in Faith Committee understands that we cannot expect a new thing to happen (i.e., a change in the trends of our Worship attendance) unless we do a new thing.

In September, we said farewell to Dee Baraw, who faithfully lead our youth group for more than fourteen years. Dee's departure is one that many are still grieving, and we miss her compassion and the ways she has been an inspiration. Our youth programs remain in transition as Erich Schmitt continues to build relationships with our families and our congregation. We are fortunate that his gifts for ministry and his experience with our youth through Cal-Pac camps give him a head-start as he leads us forward.

In November, we held our annual all-Church Conference. As a part of this, we bid farewell to our traditional committee structure and will be led instead by a combined Church Council. This significant change is an attempt to be more flexible and responsive in our decision-making, but also includes the benefit of requiring fewer leaders to fill committee roles.

In December, we found that our church had been a victim of fraud. More detail on this can be found in the Finance section on page 6 of this newsletter. Something we learned from this experience is that we have capable leaders who found and responded to this very quickly. We continue to take great care to be faithful stewards of the gifts given in support of the ministries of this congregation.

On one hand, I want to make a joke about how all these challenges in 2019 should mean we get some kind of “easy pass” for 2020. This has been a lot for the incredible leaders of this congregation! The truth, however, is that we still have much to do. I believe that we must step into this work, that we must step into these challenges, and we must step forward along the path that God lights before us. We have gifted and motivated leaders who are guiding us forward. I believe that we are capable of growing forward together.

My question for you is this: How will *you* step into these possibilities?

In faith and in love...



Pastor Bob

# ***We Care for One Another***

## **Visioning Process**

A great big thank you to all 61 people who took the time to fill out the comprehensive congregational assessment survey. Our consultant Rev. Dr. Cedrick Bridgeforth assures us that we have a rich set of responses to work with. It's clear that we have a lot of passion for our ministries. Two that stood out in particular are our music program and Project Grace, a.k.a. Wednesday night meal.

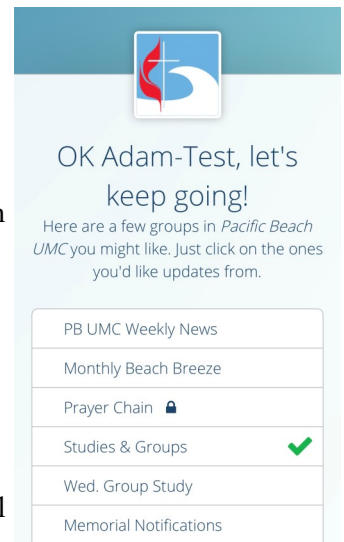
Your VUE committee is sorting through these responses to develop a plan that will be brought to the congregation for more input and, ultimately, consensus. More info to come.

## **New Year Wesley Challenge Small Group**

by Adam M.-L.

January is a time for us to build good habits and start new things. This year, we will be launching an *all digital* 21-day small group, using the Marco Polo app for Android and iPhone. Each day the group will consider one of Wesley's Holy Club questions, following along with The Wesley Challenge. You can pick up the participant guide for Kindle from Cokesbury, or (if finances are tight) contact Adam M. Sign up with your name and cell number on the sheet in the narthex, or email AdamM@pbumc.org to be included. Make sure you sign up for "Studies & Groups" updates from Flocknote as new small group opportunities launch in 2020. You can sign up or edit your Flocknote settings by texting PBUMC to 84576 or logging in at [www.flocknote.com/pbumc](http://www.flocknote.com/pbumc).

Many people have been asking questions about this online format. Our goal is to offer options for busy people who want to be involved in spiritual development. If you are interested in Small Groups or Bible studies, Pastor Bob and Adam are brainstorming ways to offer options that meet the congregation's needs. Please reach out to them if you have ideas or feel God calling you to facilitate or lead a small group.



*Note: If you would prefer not to have your birthday published in the print version of Beach Breeze, simply notify the church office.*

The *Beach Breeze* is a monthly publication of the Pacific Beach United Methodist Church. Please visit our website at [www.myPBchurch.org](http://www.myPBchurch.org).



## **Flower Ministry**

by Betty J.

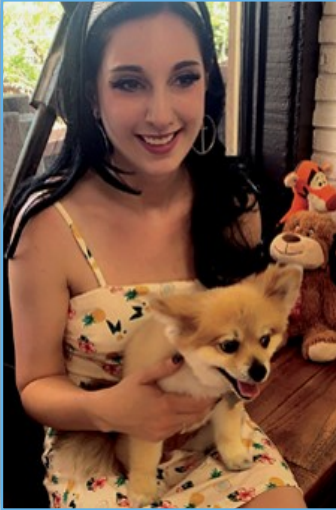
We have been giving out many bouquets after second service, and are running low on vases. We need vases at least 8 inches tall. They can be left in the kitchen. Thank you for your donations.

If you would like a cheery bouquet, or wish to deliver one to a friend, see the Flower Ladies in the kitchen after second service.

# ***We Grow in Grace & Faith***

## **Meet Our New Office Administrator**

by Lynn “Doc” N.; SPRC Chair



**W**e recently added Ivey Merrill to the PB UMC family. She is currently getting settled in the office and is an absolute gift as an addition to the team!

Ivey graduated cum laude from Point Loma Nazarene University last May with a degree in creative writing. Yes, she can write and edit! She is currently working toward certification as a registered dietitian, a personal goal she is excited about because she has a desire to work with teenagers with eating disorders.

Currently, Ivey is also handling the admin work for Trinity UMC in North Park—mostly remotely. She comes highly recommended from their pastor and already knows her way around “UMC Land.”

When not doing UMC work, Ivey is passionate about poetry, linguistics, and sans serif typography. For those unfamiliar with that last one, she knows enough about design to have a favorite family of font grouping in lettering. So, you guessed it, Ivey can also help with many things on the graphic side of the house.

One thing I didn’t know about her until recently is that she loves to share her recommendations on the best thrift shops! Now that’s bound to come in handy at some point, right?

So, everyone welcome Ivey to the PB UMC family. She is quite a find, and we are twice blessed to have her taking the reins in our office. ***Welcome Ivey!***

## **Deadline Extended for Estimate of Giving Cards**

**P**lease return your Estimate of Giving cards by January 5th! If you cannot find your estimate of giving (pledge) card, you may email our Financial Secretary, Linda A., at [LindaA@pbumc.org](mailto:LindaA@pbumc.org). Planning your giving means we can plan the ministries of the church. Our ministry and outreach depend on you!



**S**tephen Ministry training begins Sunday, January 5, 2020, from 10:30 to 11:30 am.



## **Children's Choir**

**C**hildren's Choir is taking a brief break this month. Watch *Beach Breeze* and Sunday worship service videos for updates.





## ***We Reach Out to Others***

### **Shoreline Community Services**

by Hope A.



After a brief hiatus, Shoreline Community Services is again up and running to support PB UMC's Project Grace. Shoreline was formed in 2015 to solicit support for our Wednesday night meal and clinics, from donors who don't wish to or can't contribute to a religious organization.

Armed with some new board members, grant leads, and several generous checks from the congregation, our goal for 2020 is for Shoreline to be able to completely support the Wednesday night expenses of about \$30,000 per year. If you wish to designate contributions directly for Project Grace, it would be helpful if you write the check to Shoreline Community Services instead of PB UMC (though we will gladly accept contributions in any form!). Contributions made directly to Shoreline will help us to establish a track record of support in the community that will enhance our ability to solicit grants. Shoreline's mailing address is the same as the church: 1561 Thomas Ave, San Diego, CA 92109.



### **January Youth Ministry Activity**

#### **District Event**

Outdoor Movie Night at Chula Vista UMC  
Sunday, January 12th , 5:00-7:30 pm

Connect with Erich Schmitt at [erichs@pbumc.org](mailto:erichs@pbumc.org)

### **Start the New Year With Wellness**

by Lynn "Doc" N.

You are invited to a workshop I am offering in January at The Water Conservation Garden near Cuyamaca College. It is based on the Japanese practice of Shinrin-Yoku, literally, *Forest Bathing*, and involves the health benefits of total immersion in nature. During the workshop you will learn the basic science behind Shinrin-Yoku, then immerse yourself in the health and wellness of it. It's a slow-paced, fully accessible, discovery of our relationship with nature. For more information, or to register for the workshop, visit: [www.TheGarden.org/events/](http://www.TheGarden.org/events/) and look for **Nature Therapy** on either Sunday, January 12<sup>th</sup> or 19<sup>th</sup> from 1:00-2:30pm. The workshop is limited to a small group, so register early.



Be well - "Doc"

# Circle of Support

## November 2019 Record of Generosity

	Budget	Actual
November giving	\$21,456	\$16,711
November other sources of income	\$9,205	\$8,160
November total available for ministry	\$30,661	\$24,870
November expended in ministry	\$33,791	\$17,114
November income minus expenses	(\$3,130)	\$7,757
YTD giving	\$236,015	\$191,702
YTD other sources of income	\$134,464	\$122,040
YTD total available for ministry	\$370,479	\$313,742
YTD expended in ministry	\$382,099	\$345,987
YTD income minus expenses	(\$11,620)	(\$32,245)
Year 2019 budget	\$415,890	

### Sharing the Grace of God in Worship

Nov 24 – 101 persons  
Dec 1 – 114 persons  
Dec 8 – 114 persons  
Dec 15 – 321 persons (Musical)

### Joined at Christ's Table on Wednesday Nights

Nov 27 – 178 persons  
(Thanksgiving Meal)  
Dec 4 – 120 persons  
Dec 11 – 160 persons  
Dec 18 – 252 persons  
(Christmas Meal)

## Reflections From the Finance Team

As Pastor Bob announced at worship on December 15, we have been hit by fraud. The good news is that we are covered by insurance with a \$500 deductible. We are working with the police and the bank's fraud department to correct and pursue the issue. Our strong accounting controls allowed us to find the problem fairly quickly.

Over the years the church has developed many financial policies and procedures to responsibly manage the gifts and money that we receive. Although we are shocked and dismayed that we have been a victim of financial fraud and theft, we are heartened to learn that our policies and procedures work.

**About this month's Record of Generosity table:** Unfortunately, expenses have been recorded incorrectly in the accounting system and we are in the middle of cleaning up that information. So again this month we are providing an estimated record of generosity instead of finalized numbers. We're confident the income is accurate, but expenses could be over- or under-stated. We owed about \$9,000 in apportionments for previous months that was finally paid in December and thus is not included in year-to-date (YTD) expenses through November. Because we anticipate recovery, fraud losses above the \$500 deductible are not included in the table numbers.

December income is typically higher than average. We expect that YTD income minus expenses will improve, but probably not to break even. By way of comparison, at the end of November 2018 we had a YTD net loss of (\$10,293). Generous giving put us in the black at year-end 2018 with a positive net income of \$5,091.

## January Communion Offering: Human Relations Day

Our January communion offering will benefit Human Relations Day, one of six United Methodist Church special Sundays. Proceeds from this special offering are allocated for outreach to communities in the United States and Puerto Rico, encouraging social justice and work with at-risk youth.

### CHURCH STAFF:

Lead Pastor: The Rev Bob Rhodes  
Sojourning Pastor: The Rev Christopher Carter, PhD  
Office Administrator: Ivey Merrill

Music Director: Ron Jessee  
Sunday School Coordinator: Malea Sandstrom  
Youth Ministry Coordinator: Erich Schmitt

# Calendar of Events

## Worship Times:

9:00 am, Worship Celebration

10:30 am, Worship Celebration

## Sunday Music Rehearsals:

8 am, Voices of Praise

(Adults & Youth)

10 am, Children's Choir



### Week 1

Wed, Jan 1	Happy New Year!
	5:30 pm, SD Project Grace
Fri, Jan 3	7:30 pm, Narc Anon
Sat, Jan 4	9:00 am, Prayers & Squares Quilters

### Week 2

Sun, Jan 5	Worship and Communion
	10:30 am, Stephen Ministry Training
Mon, Jan 6	6:00 pm, Al-Anon
Wed, Jan 8	11:30 am, Scripture & Sermon Study
	5:30 pm, SD Project Grace
Thurs, Jan 9	7:00 pm, Choir Rehearsal
Fri, Jan 10	7:30 pm, Narc Anon

### Week 4

Sun, Jan 19	Worship
Mon, Jan 20	January <i>Beach Breeze</i> Deadline
	6:00 pm, Al-Anon
Wed, Jan 22	11:30 am, Scripture & Sermon Study
	5:30 pm, SD Project Grace
	5:30 pm, Storefront Ministries
Thurs, Jan 23	7:00 pm, Choir Rehearsal
Fri, Jan 24	7:30 pm, Narc Anon

### Week 3

Sun, Jan 12	Worship
Mon, Jan 13	5:30 pm, Scripture & Sermon Study
	6:00 pm, Al-Anon
Tues, Jan 14	6:30 pm, Church Council Meeting
Wed, Jan 15	11:30 am, Scripture & Sermon Study
	5:30 pm, SD Project Grace
Thurs, Jan 16	7:00 pm, Choir Rehearsal
Fri, Jan 17	7:30 pm, Narc Anon
Sat, Jan 18	9:00 am, Prayers & Squares Quilters

### Week 5

Sun, Jan 26	Worship
	10:00 am, Children's Choir Resumes
Mon, Jan 27	5:30 pm, Scripture & Sermon Study
	6:00 pm, Al-Anon
Tues, Jan 28	9:00 am, <i>Beach Breeze</i> Folding Party
Wed, Jan 29	11:30 am, Scripture & Sermon Study
	5:30 pm, SD Project Grace
Thurs, Jan 30	7:00 pm, Choir Rehearsal
Fri, Jan 31	7:30 pm, Narc Anon

## ***We Love and Worship God***

### **January Scriptures**

<b>Jan 5, 2020</b>	Isaiah 60:1-6; Psalm 72:1-7, 10-14; Ephesians 3:1-12; Matthew 2:1-12
<b>Jan 12, 2020</b>	Isaiah 42:1-9; Psalm 29; Acts 10:34-43; Matthew 3:13-17
<b>Jan 19, 2020</b>	Isaiah 49:1-7; Psalm 40:1-11; 1 Corinthians 1:1-9; John 1:29-42
<b>Jan 26, 2020</b>	Isaiah 9:1-4; Psalm 27:1, 4-9; 1 Corinthians 1:10-18; Matthew 4:12-23

### **Pacific Beach United Methodist Church**



1561 Thomas Avenue  
San Diego, CA 92109

**ELECTRONIC SERVICE REQUESTED**

Non Profit  
Organization  
U.S. Postage  
\* PAID \*  
San Diego, CA  
Permit No. 174

## **Meet Tech-Artist/Sunday School Teacher Amy S.**

by Roving Reporter Marcia M.

I recently had the opportunity to get to know Amy S., who is a tech-artist and a Sunday school teacher at PB UMC. Amy's entire family practically grew up in PB UMC. Her grandparents started coming in 1959. Her grandmother was the church secretary in the 70s, 80s, and 90s. Amy has been attending for 26 years. Other family members who attend regularly are Ralph and Ben S., her uncle and cousin. The core family moved in 2011, but continued attending until 2017 when it became too long a drive. Even so, her dad attends once a month as a Sunday school teacher, and her stepmom is a member of our quilting group.

Amy is a member of our Tech-Arts team. "I run the projection once a month; some times twice a month. I love feeling like I am contributing to the service by being responsible for whatever is on the screen. Now I've got it down to a science: lift the shift button at the last syllable to keep in sync. I would encourage others to join the Tech-Arts team. The first time can be nerve racking, but it didn't take me long to love it. It is not a big deal, but it is an important contribution to PB UMC."

Amy is also one of our Sunday School teachers. She teaches Sunday School the first Sunday of the month. She told me, "We have lessons packages from which the teachers can pick out what they want to use. The packages are image-based actual bible studies. They include pamphlets with activities for the kids, a fun and engaging video, and prompts for questions you can ask to help in discussions about the video and bible study. I study these items so that I have the message and can talk to the kids about it."

Amy is a kindergarten teacher at a German immersion school. She has a teaching partner, and they switch class time. She teaches in German, and her partner teaches in English.

I really enjoyed getting to know Amy, and I hope you do too.

